

# Mylan HIV Self Test

is the world's only integrated  
HIV Self Test device<sup>1</sup>

**WHO**  
Prequalified<sup>2</sup>



Safe<sup>1</sup>



Accurate<sup>1</sup>



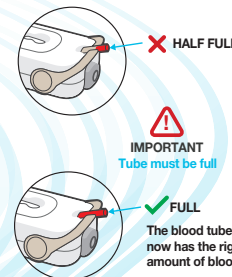
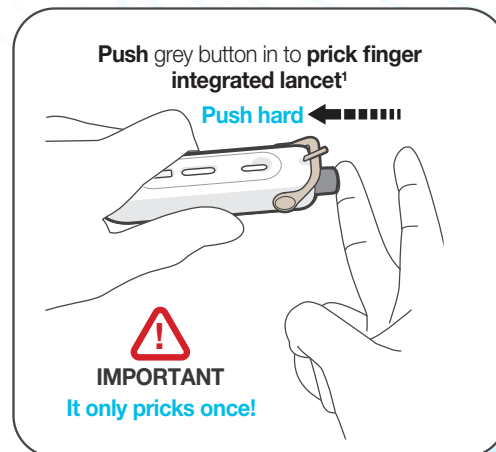
Convenient<sup>1</sup>



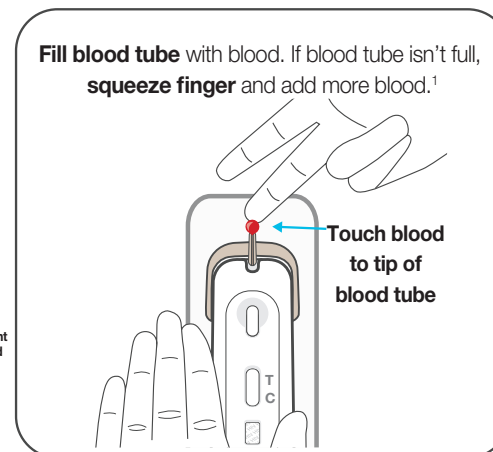
- ✓ Removes need for multiple test components<sup>1</sup>
- ✓ Reduces user errors<sup>1</sup>
- ✓ Simplifies test procedures<sup>1</sup>
- ✓ Improves test accuracy<sup>1</sup>

# Mylan HIV Self Test is Easy to Use

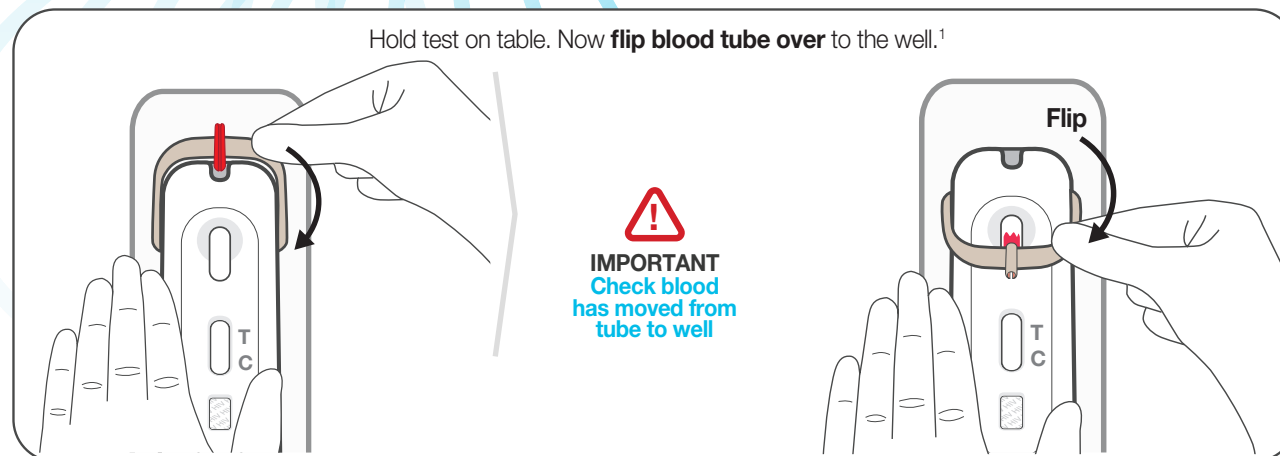
## Step 1



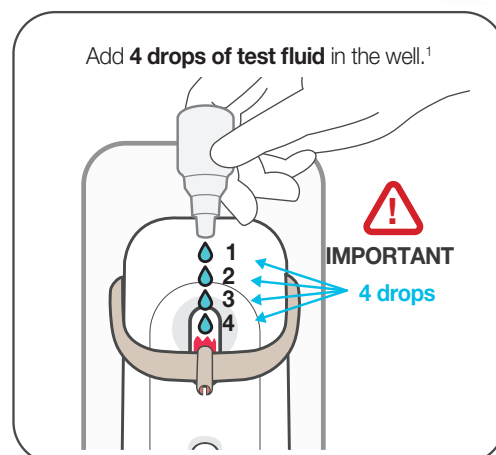
## Step 2



## Step 3



## Step 4



## Step 5



## — HIV negative

If one line appears at the C, you tested HIV negative. There must be no line at the T.

This is a screening test.

Test again after 3 months.

See included care card for additional information.



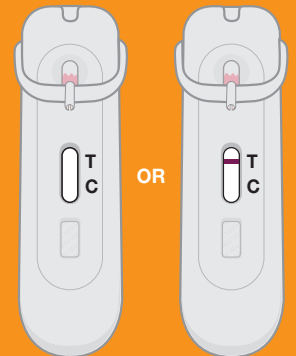
## ? Test did not work

If no line appears at the C, the test did not work.

This is a screening test. Go to a clinic for further testing.



See included care card for additional information.



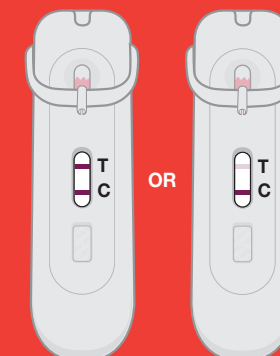
## + HIV positive

If two lines appear, even if faint, you tested HIV positive.

This is a screening test. Go to a clinic for further testing.



See included care card for additional information.

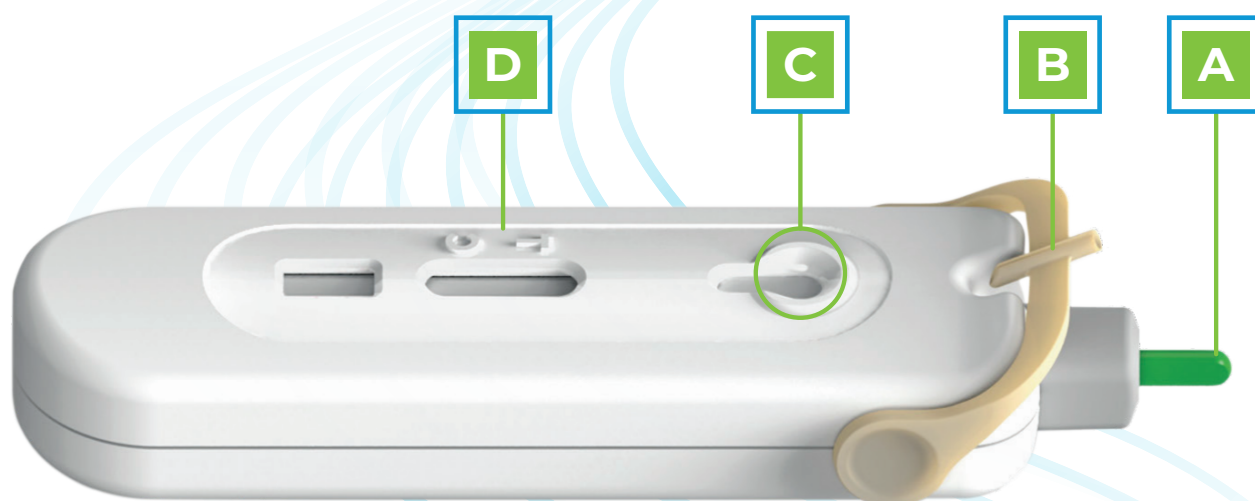


For more information and to watch step by step test procedure video please visit : <https://www.mylanez2uz.com>

**Important Note:** Wash and dry hands before performing the test. Instructions for use that comes with the pack should be read carefully before performing the test. This is a screening test. If your result interprets as “HIV negative”, please test after 3 months. If result interprets as “Test did not work” or “HIV Positive”, go to a clinic for further testing.

# Mylan HIV Self Test

is recognized for innovative design\*



**A**

## Built-in Safety Lancet<sup>1</sup>

The auto-retracting safety lancet eliminates the risk of hazardous sharps injuries by locking the needle inside the device after use for safe disposal.

**B**

## Accurate Blood Collection<sup>1</sup>

The easy-to-use blood collection unit is designed to collect exactly the right sample volume (10 µl), ensuring optimal test performance.

**C**

## Easy Blood Delivery<sup>1</sup>

Blood is delivered cleanly to the test strip by simply rotating the blood collection unit.

**D**

## Easy Interpretation of Result<sup>1</sup>

The test result is displayed clearly in just 15 minutes.

\*1



## References:

1. Data on file.
2. WHO PQ Public Report ; Version 1.0; July 2019.  
Available at: [https://www.who.int/diagnostics\\_laboratory/evaluations/pq-list/190708\\_pqdx\\_0320\\_090\\_00\\_pqpr\\_mylan\\_hiv\\_self\\_test.pdf](https://www.who.int/diagnostics_laboratory/evaluations/pq-list/190708_pqdx_0320_090_00_pqpr_mylan_hiv_self_test.pdf); Accessed on 1st April 2020

For further information, please contact:

## Mylan Pharmaceuticals Private Limited

No. 32/1 & 2, 34/1 to 4, 7th to 12th Floor,  
Prestige Platina Block 3, Kadubeesanahalli Village,  
Varthur Hobli, Outer Ring Road, Bangalore East Taluk,  
Bangalore – 560 103.  
Tel: +91 80 6672 8000  
Fax: +91 80 6672 8899  
E – mail: [mylan.india@mylan.in](mailto:mylan.india@mylan.in)  
Website: [www.mylan.in](http://www.mylan.in)

## Registered Office

Plot No. 1-A/2, MIDC, Industrial Area,  
Taloja, Panvel, Raigad (Dist.),  
Maharashtra – 410 208, India  
CIN: U73100MH1997PTC106267

## For more information please visit:

<http://www.ez2uzhivselftest.com>



## Follow us on:



#Ez2UzHIVSelfTest

MYL/G/2020/174/EXP/05/2022